

Housekeeping and ASCCC Resources

ASCCC GP Canvas - <https://tinyurl.com/CCC-GP2018>

ASCCC Guided Pathways RESOURCES

<https://www.asccc.org/guided-pathways>

Welcome! We'll be with you shortly
The chat will be used for questions and input
All attendees will be muted



Academic Senate
for California Community Colleges

LEADERSHIP. EMPOWERMENT. VOICE.

Developing Practices and Materials for Counseling

Presenters:

Randy Beach, ASCCC Guided Pathways Lead, Southwestern College

Janet Fulks, ASCCC Guided Pathways Lead, Capacity Building

Ty Simpson, San Bernardino Valley College, Guided Pathways Task Force

Teresa Aldredge, Counselor/Umoja Diop Scholars Coordinator

Cosumnes River Colleges



ACADEMIC SENATE
for CALIFORNIA COMMUNITY COLLEGES

Celebrating 50 years

Thank you for joining us for the ASCCC GP webinars

Webinars
will be back
in fall 2019!



Want *MORE* Guided Pathways?

Jul. 10-13, [Curriculum
Institute](#), Burlingame

Sept. 13-14, [2019
Academic Academy](#),
Long Beach



Developing Practices and Materials for Counseling

Guided Pathways BEGINS with the correct connection between the student's goals and reasons for attending college and the types of programs, scheduling and exploration available for students. How do we meet students where they are at and help them understand pathways and support available to help create rigorous goals and realistic plans. Join us as we begin to look at Guided Pathways counseling tools.

5/22/2019

Noon – 1:00 PM

Research*: Thinking about Academic Advising in a New Way

- GP asking colleges to rethink paradigms around counseling
- Counselors receive lots of student input, but how do we collect this, validate and use it to improve the college?
- How do we use advising to give students voice?

*From Bourdon and Carduzzi (2002) in *What Works in the Community Colleges: A Synthesis of the Literature on Best Practices*

Thinking about Academic Advising in a New Way

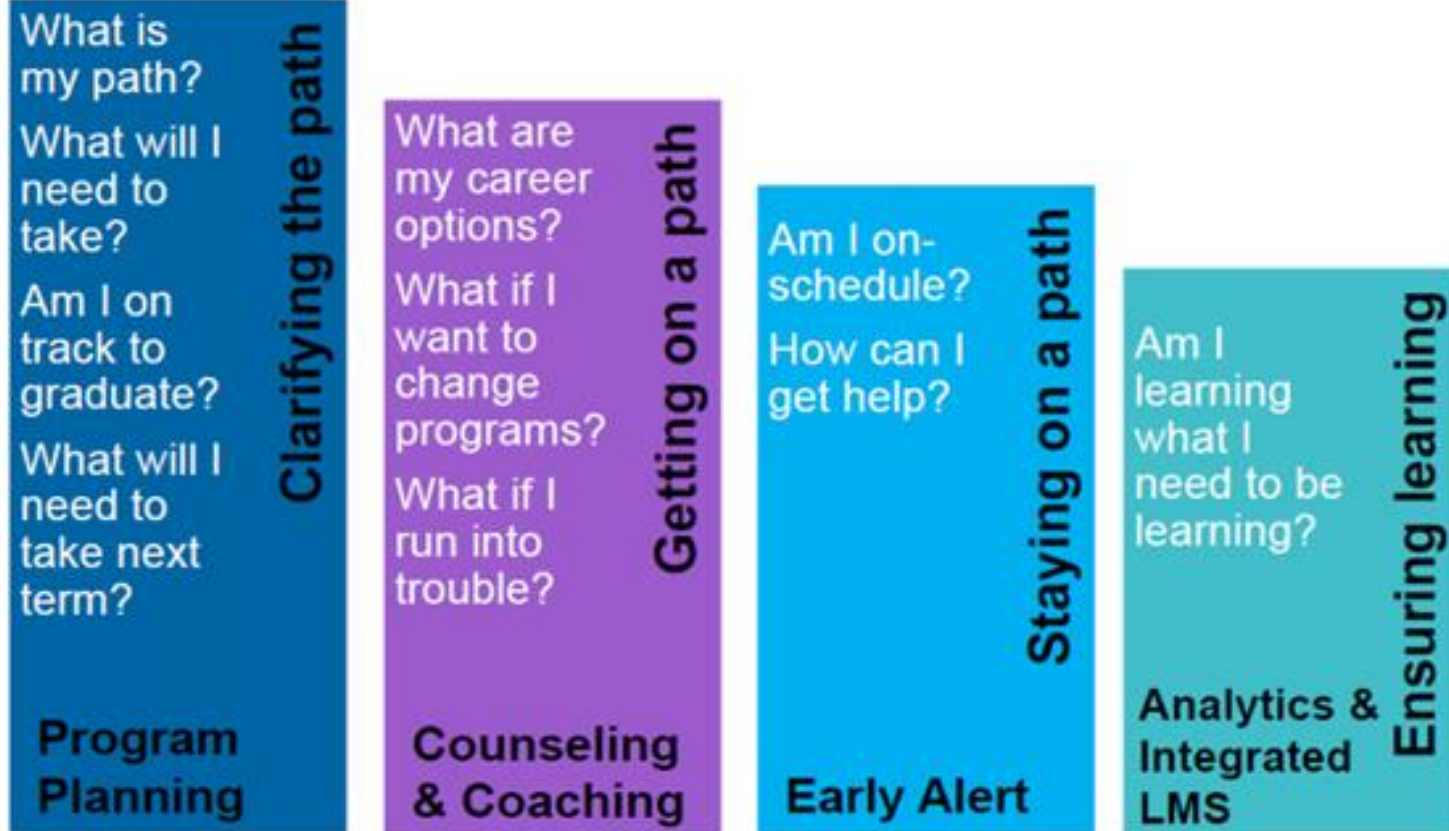
“Students are likely to persist in their efforts at learning when they feel they are in control. Students are likely to feel in control when the factors attributed to their outcomes are seen as internal, stable and controllable.”*



*Schunk, D. H., & Zimmerman, B. J. (2006). Competence and Control Beliefs: Distinguishing the Means and Ends. In P. A. Alexander & P. H. Winne (Eds.), *Handbook of educational psychology* (pp. 349-367). Mahwah, NJ, US: Lawrence Erlbaum Associates Publishers.



Advising and student support are the architecture underneath guided pathways.



What we are driving towards: SSIP

Sustained

Ongoing support rather than an “inoculation” approach

Strategic

Differentiated services to maximize capacity

Intrusive and integrated

Services are an integral part of all students' experiences, and are not viewed as stand-alone interventions.

Personalized

Students receive the support they need when they need it, from an individual who knows them well.

Transformation?



- What is the field saying?
- ASCCC counseling survey distributed in May 2018
- “The Transformation of counseling Along Guided Pathways Sidelines”
Rostrum article in October 2018
- Identifies key questions and upcoming challenges

“The Transformation of Counseling Along Guided Pathways Sidelines,” My-Linh Nguyen, Cuyamaca College, *Rostrum* October 2018

Key Questions and Areas to Explore

- Where are counselors being located on campus?
- How are counselor assignments and duties being assigned?
- How do adjunct counselors fit in?
- How is counseling coverage managed in a caseload or pathway structure?
- How does GP affect other areas of student services, such as categorical programs?
- How are counseling “peak-times” managed?
- Are paraprofessionals being used, and if so, how?



Challenges for the Future



- Staffing and space
- Understanding guided pathways and what it means to the counseling discipline
- Time and Planning
- Counselor involvement
- Time and planning
- Organized Guided Pathways Design Teams
- Research, consultations, and discussions

[“The Transformation of Counseling Along Guided Pathways Sidelines,” My-Linh Nguyen, Cuyamaca College, Rostrum October 2018](#)

How have your counseling faculty's role changed as you implement guided pathways?

?????

Please place your responses in the chat



High Touch Counseling Tools

- Making people available as a core institutional value
- Student education plans with guided pathways in mind (program mapping, fields of study, etc..)
- General orientation
- Differentiated orientation (more later)



ACADEMIC SENATE
for CALIFORNIA COMMUNITY COLLEGES

Celebrating 50 years

High Touch Counseling Tools



- Online counseling (low-tech/human-initiated)
- Teaching, not Telling (high touch interaction to help student learn key processes)
- Outreach to elementary /middle / high schools
- Inreach to enrolled students
- Postcards and other low-tech, human correspondence
- Video conferencing (low-tech/human-initiated)

Has your college experimented with embedded counselors within schools or metamajors? If so, how is it working?

?????

Please place your responses in the chat



Differentiated Orientation

- Tailored orientation materials and experiences for special populations
- Adds to your equity tool kit
- Provides focused information based on past student needs
- Creates community and a support system around individual students with a “human element”



High Tech Counseling Tools

- Student profile systems for case management counseling
- Early alert systems
- Appointment setting software
- Career exploration tools and websites
- Tools to audit student progress
- Online orientations
- Articulation sites (ASSIST.org)
- Guided Self-Placement tools
- “Degree with a Guarantee”



What tools have you found to be engaging for students since you began to design and implement a guided pathways framework?

?????

Please place your responses in the chat



Orientation and Career Exploration Processes

- Career counseling as a more intentional part of the comprehensive educational plan
- The Educational Planning Initiative as a tool to work with students <https://cccedplan.org/>
- Career Coach and other technologies <https://www.economicmodeling.com/student-success/>
- Building strong industry partnerships and collaborations
- Onboarding and Offboarding Internships
- [“EPI and Guided Pathways” ASCCC Plenary Presentation Spring 2018](#)



No Cost

College
Configurable

Complements /
supplements
existing onboarding

<https://cccedplan.org/ccmymyath/ccmymyath-overview>

MYPATH Webinar
*Wednesday, June 5,
2019*

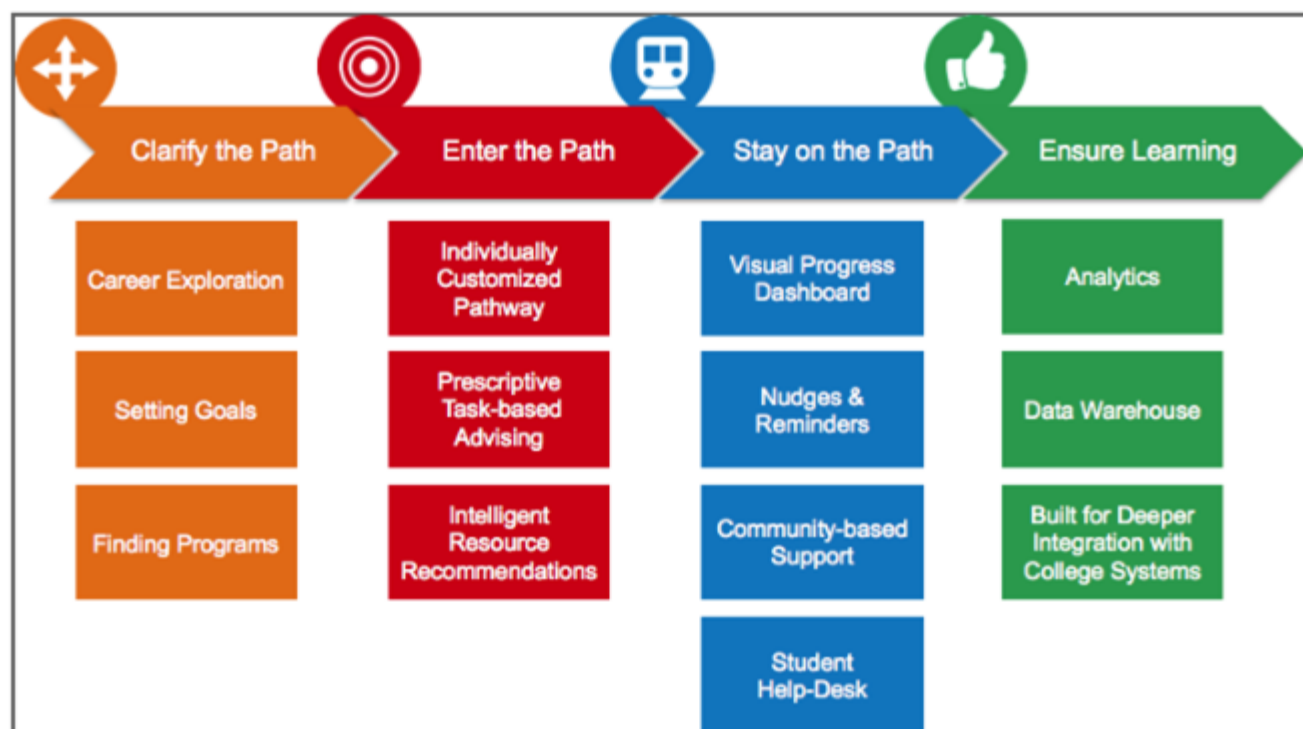
epi@ccctechcenter.org

CCC MyPath: MyPath. Your College.

Each year, on average, 72 percent of California community college students are lost between the college application process and enrollment.

CCC MyPath has been designed by the California Community Colleges to reduce this number.

By utilizing the Four Pillars of Guided Pathways, CCC MyPath **IS** the student GPS in a collegiate guided pathways framework.*



ACADEMIC SENATE
for CALIFORNIA COMMUNITY COLLEGES

Celebrating 50 years

Welcome to Career Coach

Discover majors and in-demand careers and education based on your interests!

Take Career Assessment

Take a Career Assessment to learn about yourself and Career Coach will give you career suggestions based on your interests.

[Take the Assessment](#)

Browse Careers

Browse or search for careers and we will give you relevant data on wages, employment, and the training you need.



Or [Browse all Careers](#)

Browse Programs

Browse or search for the available programs that lead to the career you want.



Or [Browse all Programs](#)



Are You a Veteran?

Find civilian careers related to your military occupation.

[Get Started with Military Search](#)



Build Your Résumé

Our easy-to-use résumé builder will help you create a professional résumé.

[Sign Up and Build Your Résumé](#)



Bertolini Student Services Center, 3rd Floor
Santa Rosa Campus
Mon-Thu 8am-5pm
Fri 8am-noon
(closed Fridays in June and July)
(707) 527-4329

Jill Mead, Career Advisor



CAREER RESOURCES

- Research and Preparation
- Career Development Handouts
- Website List for Career Planning
- Websites:
- What Can I do with a Major In...
- Jobs Made Real
- Eureka
- (Contact Counseling for Eureka site ID code)
- Occupational Outlook

CAREER ADVISING

- Assessment and Exploration
- Career Advisor Services:
 - "Undecided" assistance
 - Career Exploration/Research
 - Career Interest Inventories
 - Resume Development
 - Cover Letter
 - Interview Tips/Practice
 - Occupational Outlook
- Take a free career assessment:
- Career Coach
- Human Metrics (Myers-Briggs)

CAREER COUNSELING

- Counseling
- Career Counselor Services:
 - Assistance choosing a major
 - Develop an educational goal
 - Career Assessment Testing

WORKSHOPS/EVENTS

- Spring Workshops
- 2019 Job and Internship Fair
- Career & Networking Night
- Employer Meet Ups
- Would you like a Mentor?
- Gallery
- Petaluma Campus: Career Education Success Workshops
- Petaluma Campus: Student Success Workshops

JOB & INTERNSHIP FAIR

- Information
- Poster

Questions and Comments



Feedback!

- Please take a moment to give us your feedback on the ASCCC GPTF webinars
- ASCCC Guided Pathways Webinar Evaluation - Fall 2018/Spring 2019



Additional Resources

- **ASCCC GP Canvas** - <https://tinyurl.com/CCC-GP2018>
- **ASCCC Guided Pathways RESOURCES**
<https://www.asccc.org/guided-pathways>
- **“The Transformation of Counseling Along Guided Pathways Sidelines”** My-Linh Nguyen, Cuyamaca College, *Rostrum* October 2018
- Bourdon and Carduzzi (2002) in [*What Works in the Community Colleges: A Synthesis of the Literature on Best Practices*](#)
- *Schunk, D. H., & Zimmerman, B. J. (2006). Competence and Control Beliefs: Distinguishing the Means and Ends. In P. A. Alexander & P. H. Winne (Eds.), *Handbook of educational psychology* (pp. 349-367). Mahwah, NJ, US: Lawrence Erlbaum Associates Publishers.
- [“Transforming Advising within a Guided Pathways Context.” Melinda Mechur Karp, Ph.D., September 30, 2016](#)



Thank you for joining us for the ASCCC GP webinars

Webinars
will be back
in fall 2019!

