

Statewide Update



**Julie Bruno, Sierra College
Facilitator, ICW**

**Michelle Pilati, Rio Hondo College
Faculty Coordinator, C-ID**

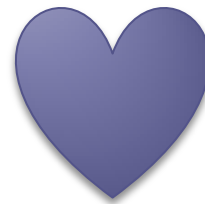
2014 Spring Curriculum Regional Meetings

OVERVIEW

- ❑ **1440, 440, C-ID, and TMCs**
- ❑ **IGETC for STEM**
- ❑ **Concern about the Creeping Unit**

OVERVIEW

- ❑ **1440, 440, C-ID, and TMCs**
 - ❑ C-ID and TMCs – Update
 - ❑ What does SB 440 mean to me?
- ❑ **Concern about the Creeping Unit**
 - ❑ Creeping units and GE bloat – Curriculum Tough Love Part II?
- ❑ **IGETC for STEM**
 - ❑ Update



Reminder: C-ID Course Descriptors

- ❑ Identify comparable courses
- ❑ Establish intrasegmental articulation
- ❑ Allow one-to-many articulation
- ❑ Identify required courses in TMCs
- ❑ CCC-CCC articulation/reciprocity
 - ❑ “Reciprocity” called for in SB 1440
 - ❑ CVC efforts require intrasegmental articulation – “course exchange” Fall 2014

C-ID by the Numbers (2/14/14)

- All 112 CCCs participating
- 6099 C-ID designations currently approved
- **12 CSUs have identified 1171 CSU courses as comparable to C-ID descriptors.**
- **243** C-ID approved descriptors in **31** disciplines.
- 1078 ADTs approved by the CCCCO since 1/22/14.

C-ID News and Notes

- C-ID Advisory Committee
 - Policies being developed
 - 5-year Review Process for C-ID Descriptors
 - Appeals Process
 - Prerequisites – require “content review”
 - Descriptor content to “other” content ratio
 - Discipline designation issue
 - Identifying “problem” descriptors
- Updating website and improving technology

TMCs by the Numbers

- 30 TMCs available for use or consideration
 - Agriculture (3) (consideration)
 - Economics (use – template available)
 - FTVE (consideration)
- 2 disciplines with TMCs in progress...
 - Child & Adolescent Development
 - Nutrition/Dietetics
- 2 disciplines with MCs (ISMC) vetting...
 - ICT
 - Nursing

TMCs by the Numbers

- 1 TMC – awaiting IGETC for STEM
 - Chemistry
- 1 TMC currently vetting
 - Biology
- 3 Engineering MCs
 - Re-vetting due to slight change
 - Two descriptors vetting

ISMC VS CCCMC

- ISMC = Intersegmental MC
- CCCMC = Intrasegmental MC
- ISMC
 - Developed in “spirit” of SB 1440
 - Nursing/Engineering – modified unit caps at CCC and CSU anticipated
 - Potential benefits?

TMC News and Notes

- Degree development guidelines/best practices forthcoming by Fall 2014 – response to a Fall 2013 resolution
- Timeline for CCCCO template availability adopted by ICW and endorsed by SACC
- Working definition of Area of Emphasis adopted
- Model curriculum definitions adopted:
 - CCCMC – Intrasegmental MC (CCC only)
 - ISMC – Intersegmental MC

Timeline for CCCCCO Templates

- TMC > Template > Local degree development
- February 1, September 1
- Economics and FTVE WERE anticipated
February 1
 - Economics – Available February 2
 - FTVE – TOP Code issues
- Agriculture and Chemistry anticipated
September 1

SB 440 (Padilla, 2013)

- New mandates for CCCs
 - BoG degree ADT development goals – Spring 2014
 - SB 440 mandates – Spring 2015
- ADT = Associate Degree for Transfer
- AOE = Area of Emphasis
 - Like a major, but broader.

SB 440 (Padilla, 2013)

- Beginning fall 2013:
 - Every CCC shall create an ADT in every major/AOE for which there is a TMC within 18 months of the approval of the TMC.
- Before the end of spring 2015:
 - Every CCC shall create an ADT in every major/AOE for which there is a TMC finalized prior to fall 2013.
 - Two TMCs in AOE will be developed.

BoG AND 440

- Each college has committed to the BoG that they will develop X degrees by the end of spring 2014
- 440 adds a mandate for the development of additional degrees by the end of spring 2015
 - For all disciplines for which there was a TMC in place prior to fall 2013 – if you have a degree in the discipline, you will create an ADT

SB 440 (Padilla, 2013)

- By the end of spring 2016:
 - At least two more TMCs in AOE's will be developed.
- Issues?
 - What is an AOE?
 - Potential CCC response to new degree development mandates?

ICW Working Definition

- An AoE is an interdisciplinary TMC that is developed to serve multiple majors at the CSU.
- Originating department at CCC may be unclear.
- Exploring:
 - Allied Health/Health Science
 - Ethnic Studies
 - STEM
 - Global studies/international relations

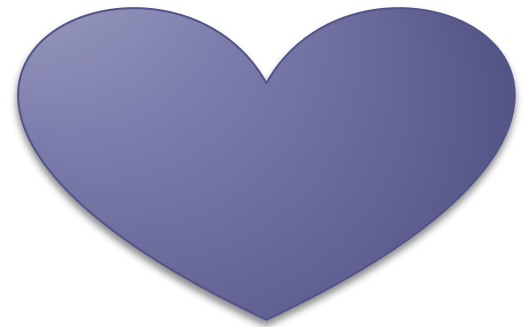
Issues with mandate...

- Workload
- Interference with local control of curriculum
- Unable to develop some ADTs due to:
 - Inability to develop and/or offer a course(s)
 - low enrollment, expensive to offer
 - lack faculty expertise
 - Unit limits – student must be able to complete degree in 60 units

Potential CCC response to ADT mandates?

- Drop existing degrees?
- Rename existing degrees?
- Develop new or (re-purpose old) mechanisms to enable colleges to offer degrees?
 - CVC
 - Re-purpose/rename “conjoint programs” – policy statement and guidelines forthcoming

AKA – Having the guts to look at
your colleagues and say “really?”

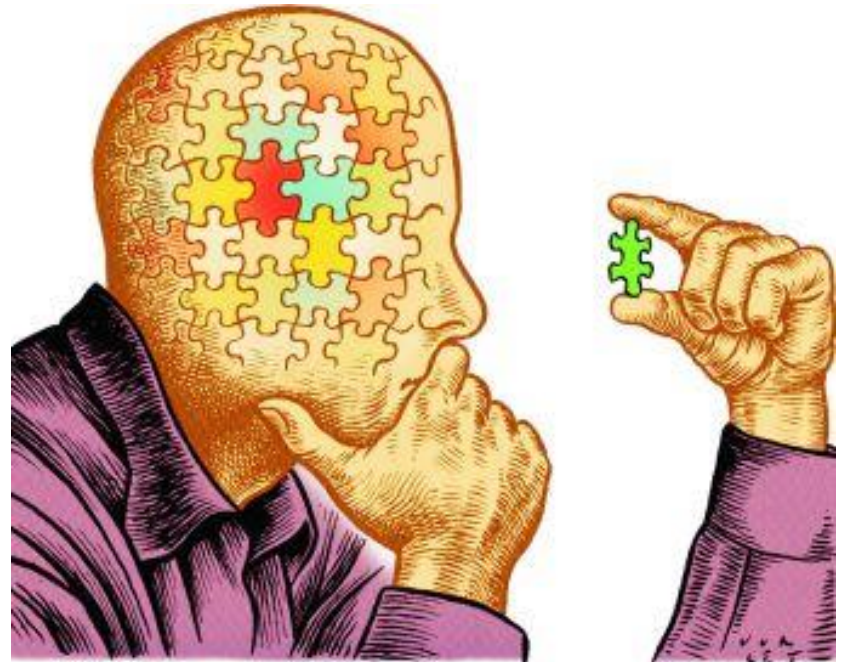


Unit *Creep/GE *Bloat

- Degrees which colleges had planned NOT to develop as a consequence of “*creep” or “*bloat” may now need to be developed.
- How does discipline X create a degree when the courses in Y and Z must be in the degree and these courses are more than the minimum units expected by C-ID and/or the college’s GE package is substantially more units than the norm?

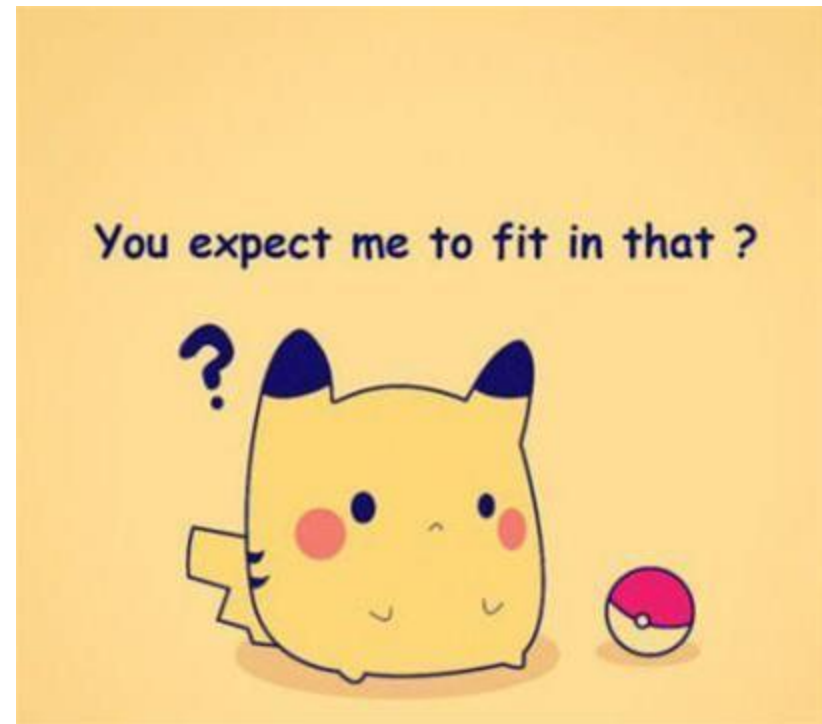
Philosophical Question

- Should students/the state/the public be able to expect that degree completion requires a finite number of units?



If units to degree should be finite..

- What happens when units “creep” in some courses?



Unit *Creep/ GE *Bloat

- All TMCs make assumptions about units – of individual courses *and* CCC transfer GE patterns.
- The focus of external parties on “excess units” has been on courses – a consequence of student behavior.
- UC/GEB as a reason for not offering a degree – a consequence of faculty behavior. Potentially challenging to defend.

Unit *Creep/ GE *Bloat

- Many colleges currently struggling with this issue.
- Critical to ensure that any UC/GEB is clearly justifiable.

Stats Stats

- 252 courses that satisfy CSU GE B4 and have “stat” in the title
- 1 is 6 units (Statway Part II at ARC)
- 23 are 5 units
 - 2 are Honors (non-Honors is less)
 - 2 are Statway
 - 7 are quarter units (so the courses are NOT 5 semester units)

Stats Stats

- 24 5-6 unit stats courses
 - 12 may be “justified”
- Only 12 of these extra-high unit stats courses
- 139 are 4 units
- 89 are 3 units (minimum units indicated in C-ID)

IGETC for STEM

- Awaiting FINAL implementation steps
- ONLY an option for TMCs/MCs that have specified it: Chemistry, Biology, Nursing, Engineering
- Guidelines and guidance under development
- Recent development – CSU GE Breadth for STEM proposed
- NOT an option for Computer Science

Details of IGETC for STEM

- In the context of ADT degrees certification under IGETC for STEM Majors, students must complete the following:
 - All courses in Areas 1 (English), 2 (Quantitative Reasoning), and 5 (Phys/Bio Sci) of the traditional IGETC; and
 - 2/3 courses in Area 3 (Arts and Humanities) and 2/3 courses in Area 4 (Soc/Beh Sci).

So...

- 1 remaining GE course in Area 3, 1 remaining GE course in Area 4.
- These deferred GE courses must be replaced in coursework before transfer with calculus and/or major science courses required by the major.

And...

- Students are eligible to complete the IGETC for STEM Majors option only if it would be impossible for them to complete both major/major preparation coursework and either IGETC and/or the CSU GE Breadth plan within 60 units prior to transfer.

Note that...

- Students transferring to the CSU should refer to degreewithaguarantee.org for details on which AS-T degrees will allow IGETC for STEM Majors. If any specific AS-T degree allows IGETC for STEM Majors as its GE pattern, the specific courses that should replace the deferred lower division general education courses may be indicated on the TMC for that discipline.

Implementation Delays..

- Due to:
 - ~~IGETC for STEM – incorporation into IGETC standards.~~
 - CSU GE for STEM – CSU needs to figure out how to implement.
 - Current unclear CCCCO position on transfer GE in ADTs
 - If the degree can't be completed in 60 units when a certain GE pattern is used, can the college have an ADT approved that will necessarily be > 60?

Local Efforts?

- Get engaged!
 - Review materials vetting.
 - Consider serving as a reviewer or on an FDRG.
- Degree development
- Submission of courses to C-ID
 - Chancellor's Office requires C-ID submission for all CORE and List A courses in a TMC.
 - Expects approval by the end of spring 2014.

Questions or Comments?

Thank you!

The bottom of the slide features a decorative graphic consisting of several horizontal lines. On the left, a solid teal line extends across the width. On the right, there are three parallel lines: a teal line on top, a light teal line in the middle, and a white line on the bottom. These lines are staggered, with the teal line starting further to the right than the others.

AA-T and AS-T Requirements

1. “the CSU shall **guarantee admission** with **junior** status”
2. “. . . does not guarantee admission for specific majors or campuses”
3. “priority admission ---to local CSU campus and to a program or major that is **similar** . . . as determined by the CSU campus”

AA-T and AS-T Requirements

“The CSU may require a student transferring pursuant to this article to take additional courses at the CSU *so long as the student is not required to take any more than 60 additional semester units or 90 quarter units* at the CSU for majors requiring 120 semester units or 180 quarter units.”

AA-T and AS-T Requirements

“The CSU shall not require students . . . to repeat courses that are similar to those taken at the CC that counted toward the associate degree for transfer.”